

# Corrie MacColl Plantations Overview

Corrie MacColl plantations employs a modern approach to fair and sustainable natural rubber farming across three plantations in Cameroon and Malaysia: Hevecam, Sudcam and JFL.

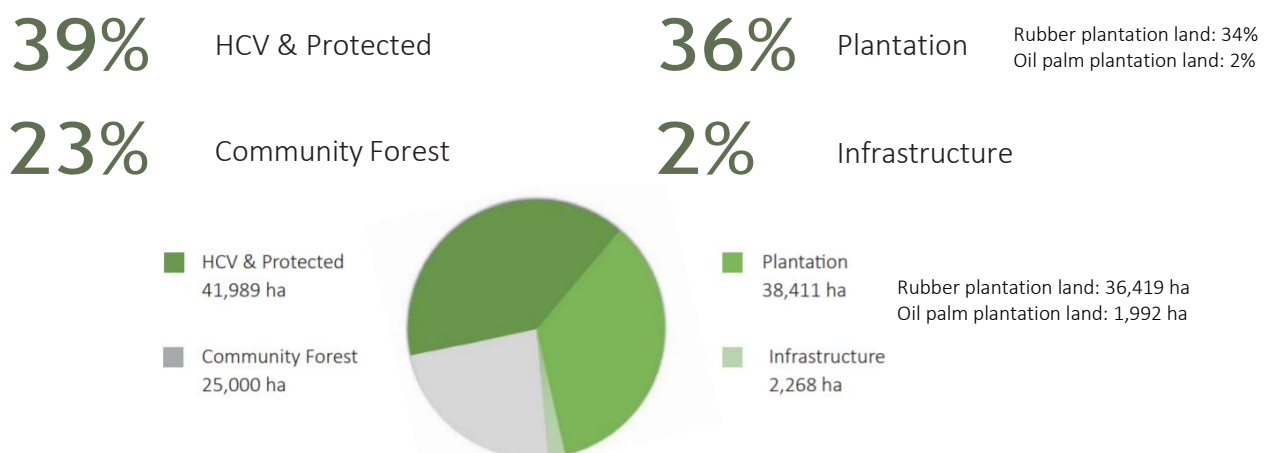
We invest in agronomical expertise and technology to maximise yield and quality, whilst minimising impact through low-intensity planting. As a sustainable model corporate citizen, ecological conservation, economic growth and social development are at the forefront of our operations strategy.

A low-intensity replanting programme, replacing our end-of-life trees with new trees, will see an increase in our mature rubber trees from 4.6 million in 2020 to 13 million in 2030 on the existing 36,419 ha of rubber planted land. This will yield a production output increase from 19,000mT in 2020 to 89,000mT in 2030.

In line with our no deforestation policy, there is no land designated for future planting. Therefore our land use will remain as 36% planted, 2% infrastructure and 62% HCV, protected and untouched land.



Total Concession: 107,668 ha



January 2023

# Sustainability

Corrie MacColl is committed to promoting, developing and implementing the sustainable and responsible use of natural rubber throughout its supply chain. We have achieved 100% traceability to our industrial plantations. Additionally, 69.5% of planted land at our Hevecam plantation is in the process to be certified by FSC FM in 2023.

Please refer to our Sustainable Natural Rubber Supply Chain Policy (SNRSCP) for further information.

## Sustainability Highlights:



62% of our land remains unplanted



25,000 ha  
Community Forest



No peat land



Global no deforestation  
policy across Corrie MacColl  
Plantations



Commitment to no  
slash and burn



Ensure responsible land  
acquisition and use



Commitment to good  
agricultural practices and  
yield improvement



Develop and implement proper land  
use plans to prevent overexploitation of  
natural resources using an integrated  
landscape management approach



Support the development  
of methods to trace  
natural rubber across the  
supply chain



Community  
engagement through  
local NGOs to address  
grievances



Initiatives governed  
by an independent  
Cameroon  
Sustainability Council

# Our Communities

As the largest private-sector employer in Cameroon, more than 43,000 individuals depend on our success. We recognise our responsibility as a modern employer to work alongside the local communities and identify new opportunities for education, empowerment and socio-economic development.



35,354  
residents



32  
villages



58  
schools



2  
hospital



23  
health clinics

## Community Overview

|                                     |                           |                             |
|-------------------------------------|---------------------------|-----------------------------|
| Hevecam Total<br>Employees<br>5,945 | 4,426<br>Male             | 1,519<br>Female             |
|                                     | 460<br>Indigenous<br>Male | 260<br>Indigenous<br>Female |
| Sudcam Total<br>Employees<br>915    | 599<br>Male               | 316<br>Female               |
|                                     | 119<br>Indigenous<br>Male | 88<br>Indigenous<br>Female  |
| JFL Total<br>Employees<br>404       | 332<br>Male               | 40<br>Female                |







# The Cameroon Outgrower Programme

---

Corrie MacColl recognises the value of smallholder partnerships in opening new market opportunities and strengthening rural economies. The Cameroon Outgrower Programme will equip 13,000 smallholder farmers with the education and financing to develop 27,000 ha of sustainable farms.

- 13,000 smallholders to benefit.
- Total of 27,000 ha of fallow land to be planted with natural rubber. Please note: this is a forecast figure, the land will not be company-owned or company-managed land, and this land is yet to be sourced for shortlist.
- All land must comply with our Sustainable Natural Rubber Supply Chain Policy (SNRSCP)
- Land within High Conservation Value or High Carbon Stock areas will be excluded, and appropriate land deeds must be secured prior to development.
- 467 smallholders have passed the onboarding assessment criteria developed by Proforest, meeting the social and environmental criteria reflected by our sustainability policy commitments.
- As of January 2023, the programme is operating across 150 hectares of land.
- The programme allows smallholder farmers to incorporate agroforestry in addition to rubber planting.
- Regular classroom and practical training is provided to ensure that smallholders continue to comply with our sustainability policy commitments. The smallholders continue to receive support from our teams, in addition to learning resources.
- The No Deforestation policy is upheld by the external verification of MapHubs, an independent GIS satellite imagery service. MapHubs is provided with the coordinates of all smallholder land and analyses deforestation by reviewing Planet quarterly image from prior to December 2018 and compares it against Planet monthly mosaic and Sentinel-2/Landsat medium resolution imagery from the time of the onboarding assessment. Going forward, the data will be reviewed on a 5-year basis.
- Additionally, Corrie MacColl's progress across sustainability KPIs in line with our sustainability-linked loan with Deutsche Bank, including No Deforestation, is reviewed annually by an external global consulting firm, ERM. Read more about the loan and sustainability review, and ERM's appointment [here](#).

|                         |             |
|-------------------------|-------------|
| Commenced               | 2020        |
| Outgrower farmers total | 13,000      |
| Planting programme      | 2020 - 2027 |

January 2023

# Hevecam Niete, Cameroon

Established: 1975

Total Concession (ha): 52,607

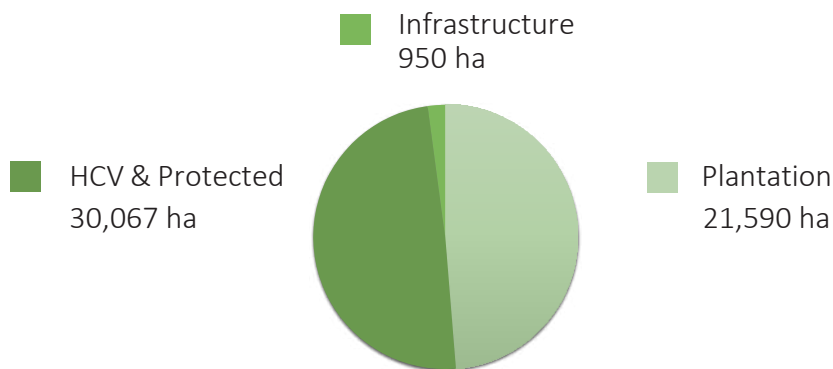
|             |        |
|-------------|--------|
| Niete       | 40,992 |
| Elogbatindi | 3,972  |
| Bissiang    | 7,643  |

Factory Annual Capacity: 51,500mT

Total Trees Planted:



## Land Allocation



2020



2030

Mature Trees Planted

4,100,600

6,304,320

Production Output

14,242

45,235

January 2023

# Sudcam

## Meyomessala, Cameroon

Established: 2008

Total Concession (ha): 45,217

North 8,236

Central 36,981

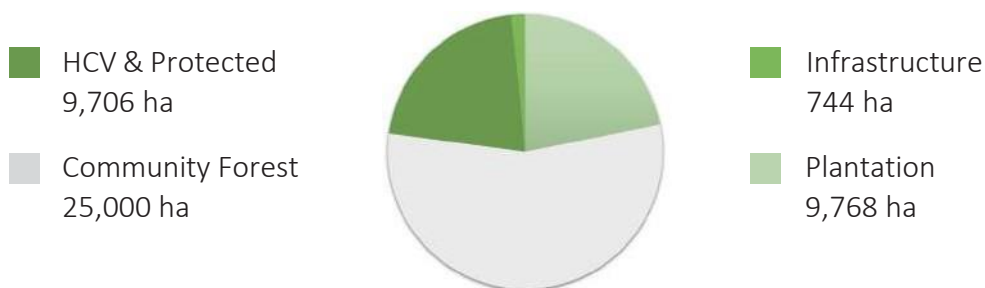
Est. Factory Completion: Q3 2020

Factory Annual Capacity: 37,500mT

Total Trees Planted:



### Land Allocation



2020

2030

Mature Trees Planted

470,250

4,395,600

Production Output

1,254

25,815

January 2023

# JFL

## Kelantan, Malaysia

71% Natural Rubber 29% Oil Palm (Certified MSPO)

Established: 2013

Total Concession (ha): 9,844

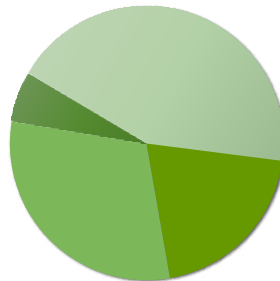
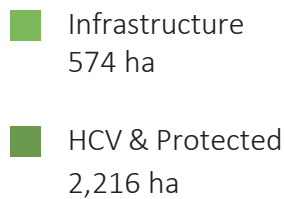
|              |       |
|--------------|-------|
| Lebir        | 2,453 |
| Ulu Nenggiri | 3,775 |
| Laloh        | 1,593 |
| Ulu Temiang  | 2,023 |

Total Trees Planted:

Rubber trees  
Oil Palm



### Land Allocation



  
2020



  
2030

Mature Rubber Trees Planted

-

2,277,450

Production Output

-

9,365



# Our Factories

---

Our Hevecam and Sudcam plantations feed two modern factories, producing high quality concentrated latex, dry latex and TSR grade to the dipping industry, as well as specialty product makers. The Sudcam factory is poised to supply 100% traceable and sustainable raw material.

Operating under the LATEXPRO and HEVEAPRO standards, the factories are accountable to a stringent 3rd party-certified audit covering Quality Standards, EHS, Sustainability and Supply Chain Security.

Our two factories have a combined capacity of 89,000mT. Production of latex is poised to increase from 10,000mT in 2020 to 60,000mT from 2030 onwards, as our trees mature and come into production.

The 2 Hevecam and Sudcam factories source rubber from our company-owned plantations, the remaining 36 Halcyon Agri factories source from third-party plantations.



ISO 9001, ISO 14001, LATEXPRO and HEVEAPRO



100% traceable raw material



A state-of-the-art laboratory



Environmental measures:

100 kW solar-power

100% effluent water recycling

Soil erosion control

Green corridor protection

Dryer Exhaust Scrubber System



Proximity to Kribi and Douala load ports

# Sourcing

---

Halcyon Agri Group sources 74% of traded volume from smallholder farmers in the form of raw material, 2% is sourced from company-owned plantations and the remaining 24% is sourced from other distributors in the form of finished goods.

3% of rubber sourced by company-owned processing facilities comes from our own operations, whilst 97% comes from third-parties.

The Group sources all rubber from the following countries:

**Asia:**

Cambodia  
India  
Indonesia  
Malaysia  
Myanmar  
Philippines

**Africa:**

Cameroon  
Gabon  
Ghana  
Guinea  
Ivory  
Coast

**Americas:**

Guatemala

78% of supply from our Corrie MacColl plantations is traceable to industrial plantation level. 22% of supply from our Corrie MacColl factories is traceable to smallholders at jurisdictional level.

Smallholder sourcing jurisdictions include the following:

- Central region, Cameroon
- East region, Cameroon
- South region, Cameroon
- Littoral region, Cameroon

## Sustainable Sourcing Policy

Early last year, we launched our Sustainable Sourcing Policy (SSP) with the purpose of extending our in-house sustainability standards to our business partners in the supply chain. The Policy was collaboratively developed with international NGO, Rainforest Alliance, based on the results of a previously undertaken Supplier Risk Assessment.

We have entered Phase 2 of this process by releasing the Policy's Implementation Manual and Strategic Actions Guide. Also developed with Rainforest Alliance, the purpose of the newly launched Manual is to ensure that our suppliers understand the values expressed within the Policy and can demonstrate alignment with them through the implementation of pragmatic and appropriate actions.

As of January 2023, the SSP has been received by 129 suppliers, with more to follow going forward. Collectively, these suppliers account for over 60% of our supply, and originate from all the major global production regions of Southeast Asia, Africa and South America.

# Responsible Practices

---

## Water Use Intensity

We commit to improve our water use intensity across our operations. The following forms part of the [criteria](#) for our sustainability-linked loan with Deutsche Bank:

- To complete a water audit to establish baseline and identify improvement opportunities; and
- To set, meet and maintain meaningful targets to improve the factory's water use intensity (targets to be aligned with Deutsche Bank and ERM).

KPI: Achieve water use intensity (freshwater withdrawals) of 9.02m<sup>3</sup>/mT by 2025 vs a 2021 baseline of 9.49m<sup>3</sup>/mT. This translates to approximately 5% absolute reduction in freshwater requirements by the Asian factories

Additionally, building on Halcyon Agri's partnership with Alliance for Water Stewardship at processing sites, we have initiated the sustainable water management certification for our Cameroon and Malaysia plantations. Hevecam has secured AWS Gold certification while JFL has successfully registered for AWS certification in 2021. These third-party certifications, which are beyond the regulatory requirement, demonstrated our commitment to consume natural resources responsibly.

## Fertilizer Use

We are actively making efforts to reduce our use of chemical fertilizer. This has included a reduction in chemical fertilizer application, as well a precision agriculture and targeted soil and leaf analysis to optimize yield.

## Fire Monitoring

Hevecam recently held a fire monitoring and response training session, hosted by the Department of Safety, Health, Environment and Security at Work (S-HSET). The teams joined by external parties: the Niété Sub Divisional Officer, the Forces of Law and Order (FMO).

## Net Zero

Halcyon Agri has announced that we are launching an industry-leading roadmap to net zero carbon emissions, making headway towards committing to the Science Based Targets initiative (SBTi).

Through the standard, the SBTi clarifies that science-based net-zero requires companies to achieve deep decarbonization of 90-95% before 2050.

Read more [here](#).

## FSC-certification

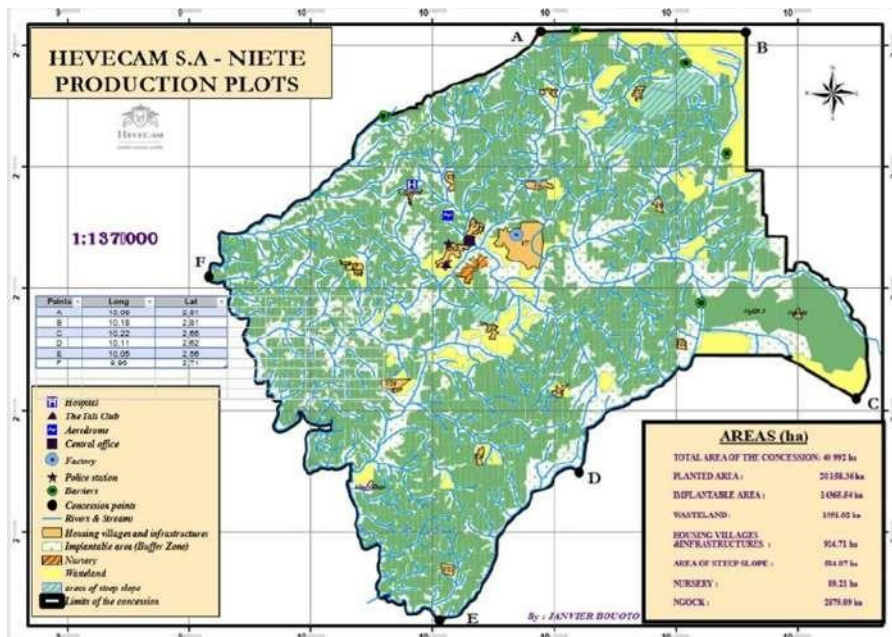
We're strengthening our capacity for FSC-certified rubber, with 2% of our natural rubber supply coming from independent smallholders, outgrowers and third-party natural. 2% percentage of the natural rubber products we handle and trade is FSC-certified.

## People

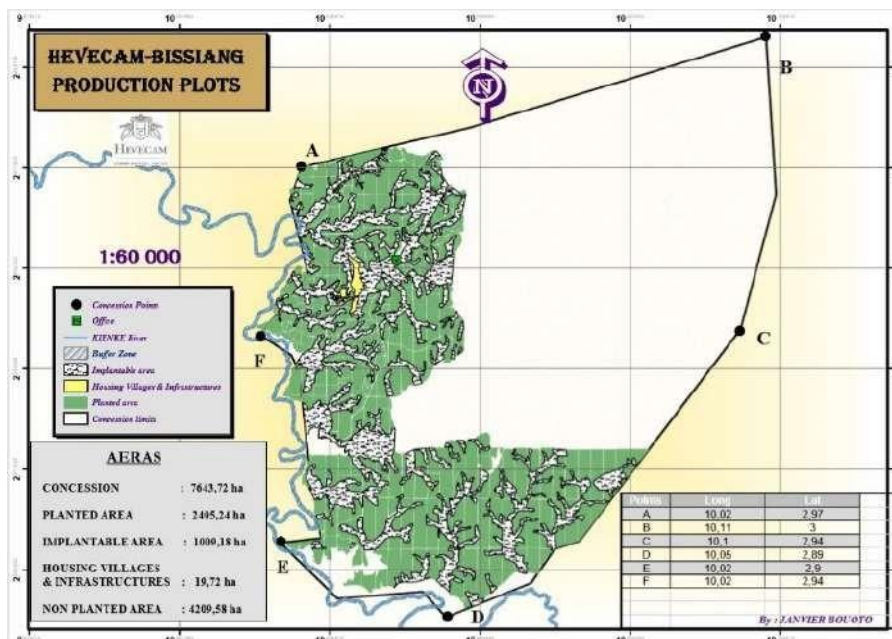
We commit to implementing gender policies through an anti-discrimination policy and regular employee training sessions on tackling practices that discriminate against women. We have also developed anti-bribery and corruption policies, and have made these readily available to employees via shared online folders (December 2022).

# Concession Maps

## Niete, Hevecam

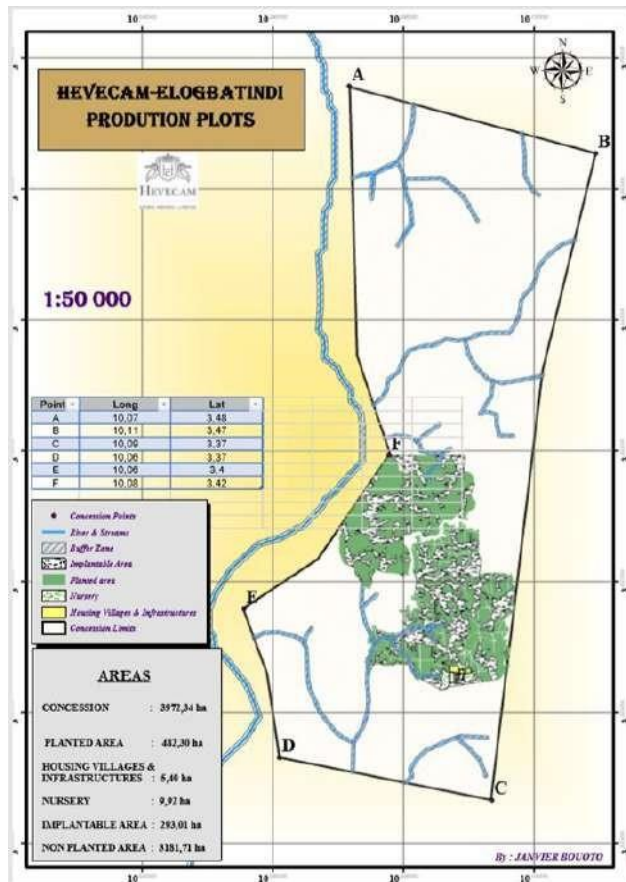


## Bissiang, Hevecam

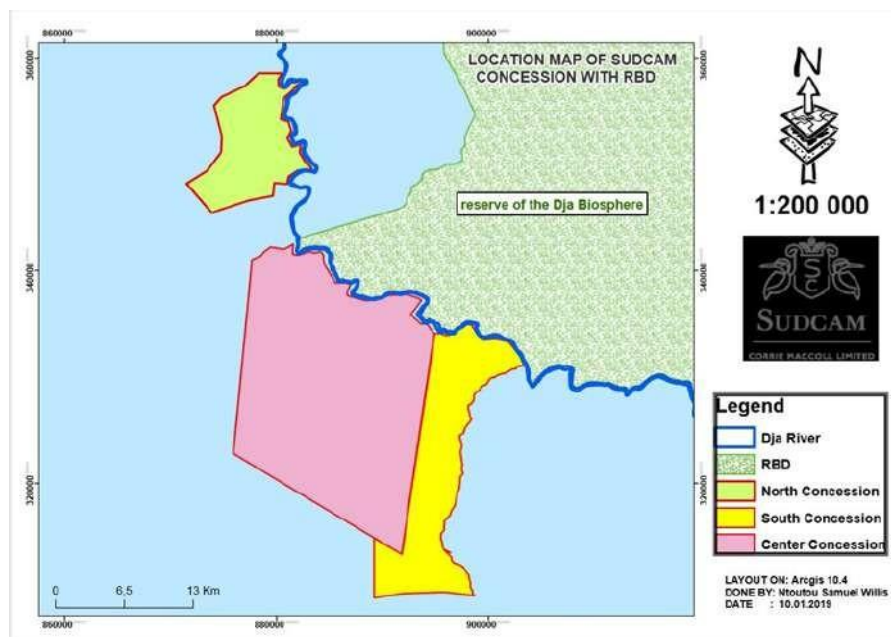




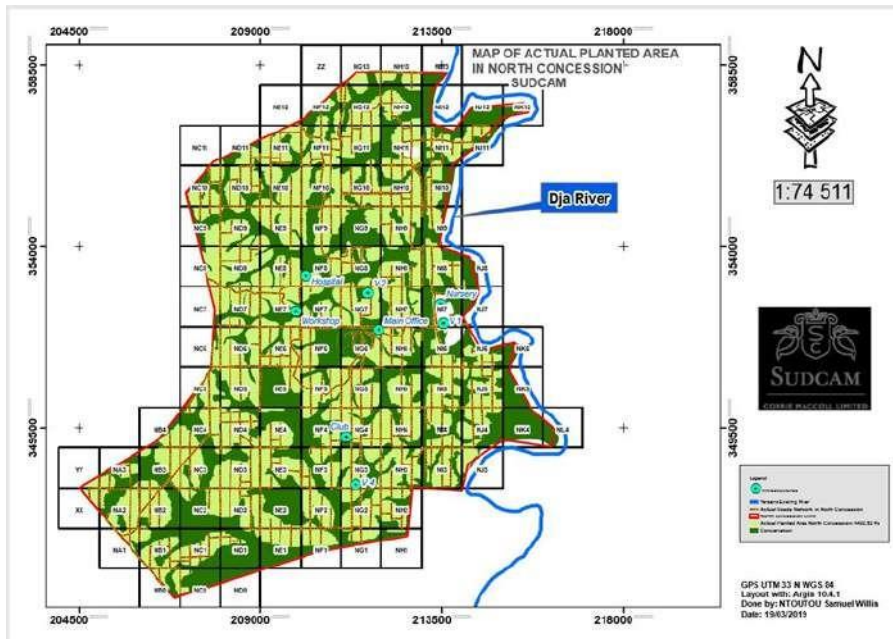
## Elogbatindi, Hevecam



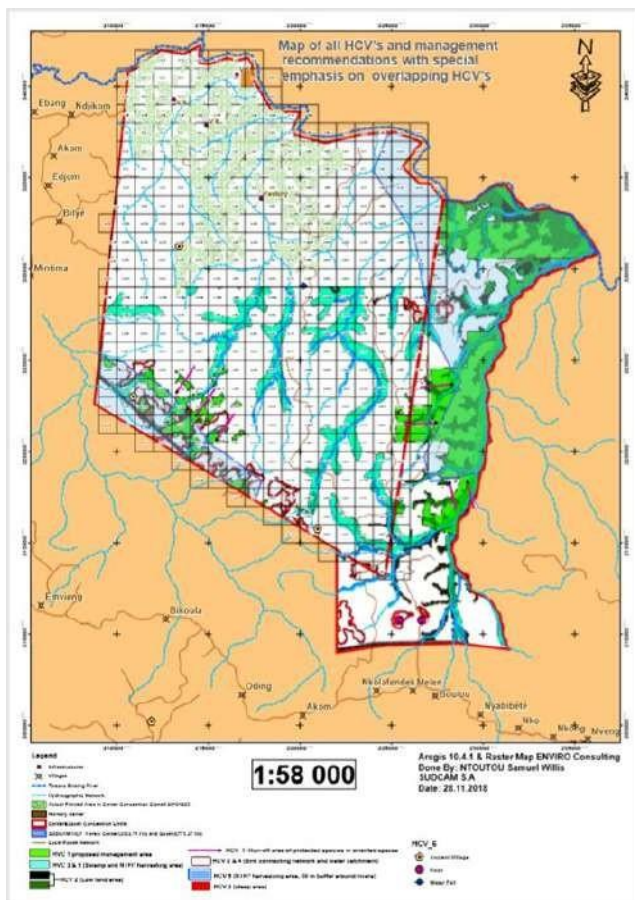
## Sudcam Concession with RBD



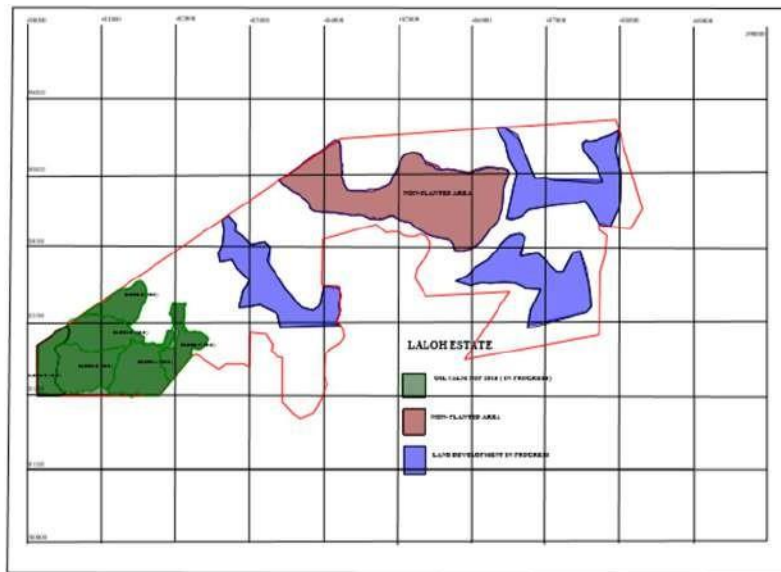
## Planted Area, North Concession, Sudcam



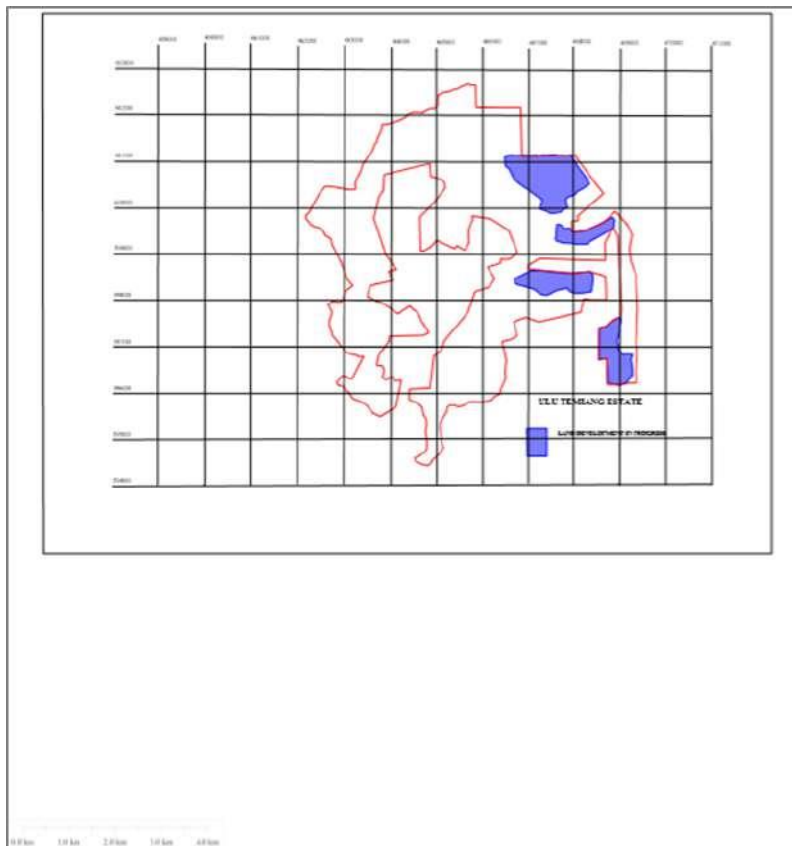
## HCV Localisation, Sudcam



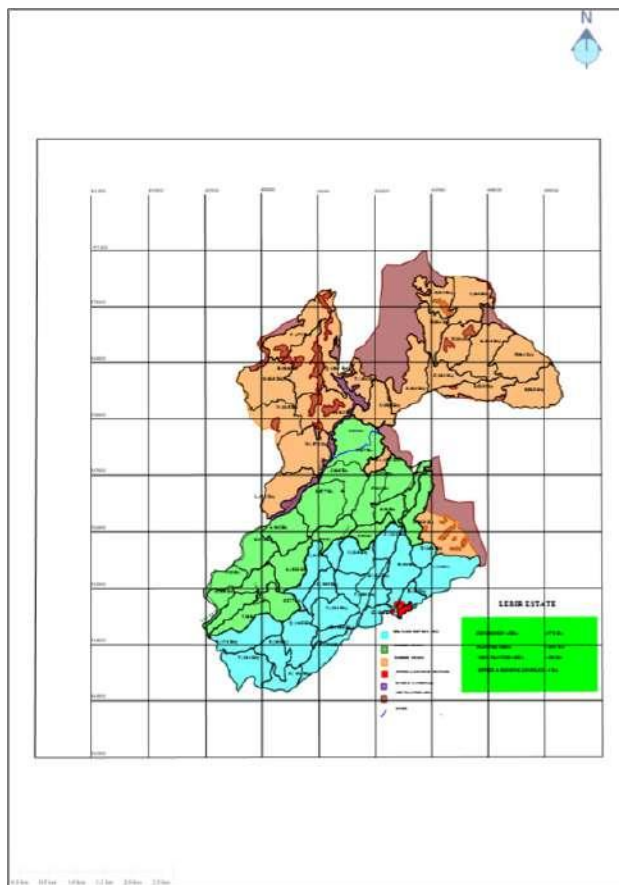
## Laloh Estate, JFL



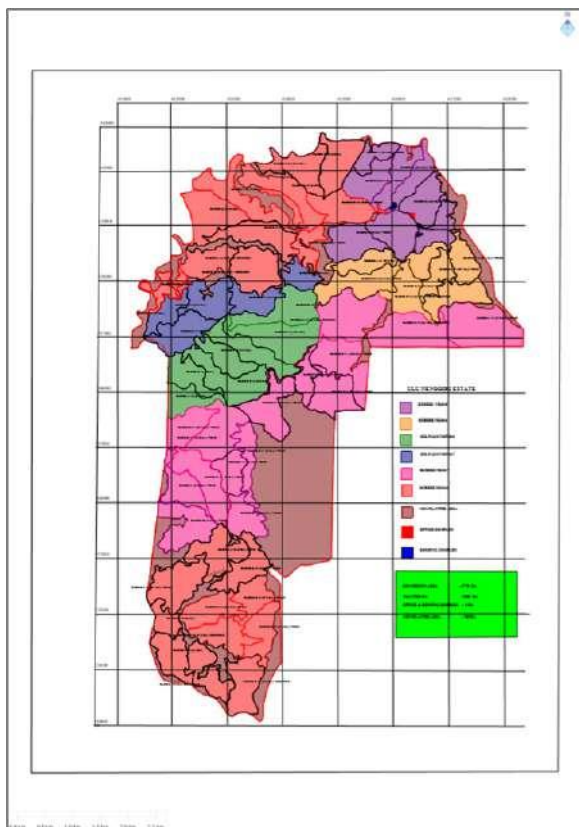
## Ulu Temiang Estate, JFL



## Lebir Estate, JFL



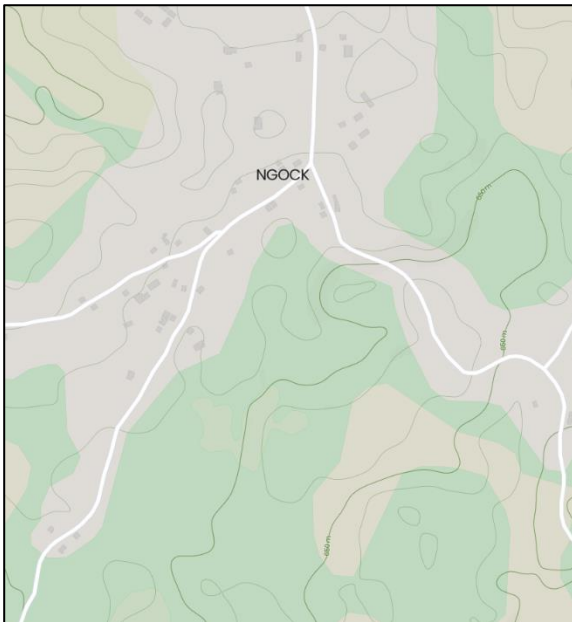
Ulu Nenggiri Estate, JFL





**Location of smallholder farmers' supplying estates:**

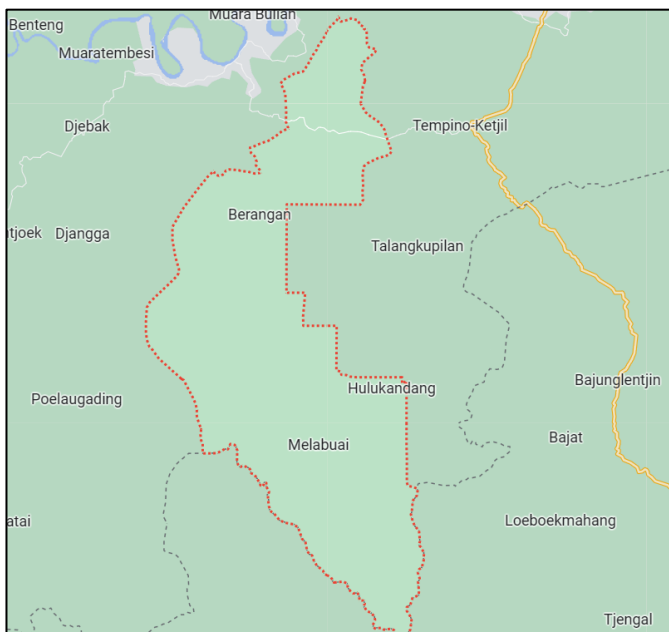
Coordinates: 4.86699°, 12.81226°



**Location of scheme smallholders:**

We launched a capacity building program with smallholder farmers in Jambi, Indonesia in 2022 to support traceability and livelihoods. The farmers are specifically located in the subdistrict of Bajubang within the Batang Hari Regency of Jambi province.

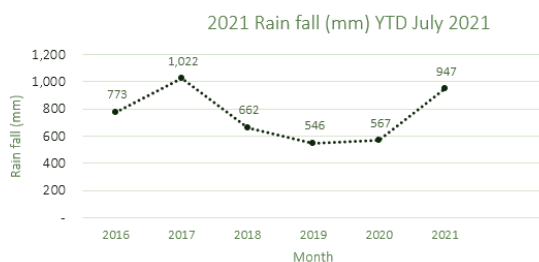
Coordinates: -1.9190580807308089, 103.41223145713069



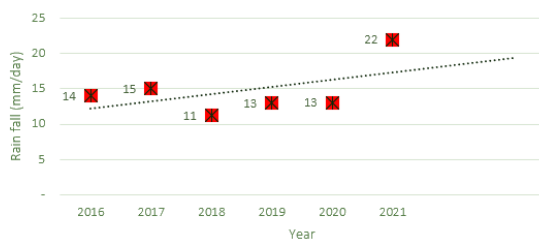
# Climate Change Risks & Responses

We monitor climate change risks, including fluctuations in rainfall patterns from 2016 to July 2021, to ensure that we take appropriate steps for risk mitigation. This includes the construction of water conservation pits, and studies to track their impact on plantation production and tree growth.

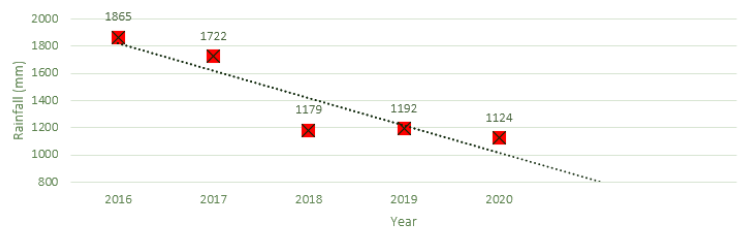
Rain fall Trends



Average rainfall per wet day 2016 - July 2021



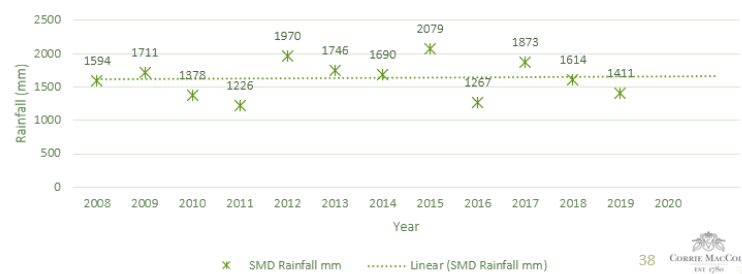
Annual Rain fall trend 2016 -2020



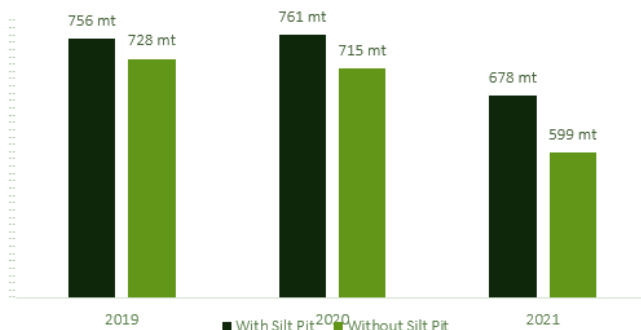
From 2016, there has been a continuous declining trend in rainfall. In 2021, the rainfall pattern has been similar to 2017.

Average rainfall per wet day shows an increasing trend. Resulting in more surface runoff and lesser percolation.

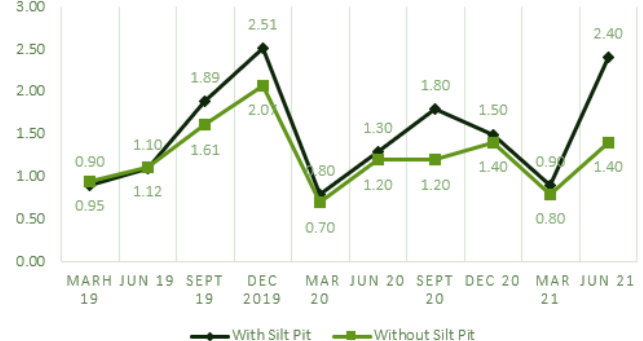
Sangmelima Rainfall mm



Impact of Water conservation pits  
On Plantation Production



Impact of water conservation pits  
On tree girth (Increase in cm)





CORRIE MACCOLL

---

EST 1780

Halcyon Agri Corporation